

COUPERS

LIFESTYLE PROPERTIES



20 Lahinch Drive Fingal VIC

4 2 4

Enjoy spectacular 180 degree views across Moonah Links and the neighbouring vineyard to Cape Schanck from this four bedroom, quality built and architecturally-designed residence.

Living at 20 Lahinch is easy with all daily living requirements on the entry level i.e. Open-plan living, dining, kitchen, covered outdoor living area, main bedroom, second bedroom and garage. The guest area with media/second living room, two bedrooms and bathroom and an additional, spacious outdoor living/entertaining area, is on the lower level which provides good separation.

Move into 20 Lahinch with no additional work required all

[For full version visit the website](https://www.coupersrealty.com.au/8180733)

Type : House

Land Size : 832 sqm

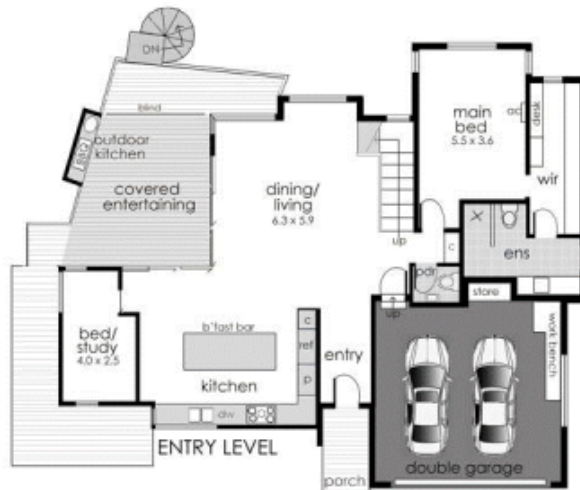
View : <https://www.coupersrealty.com.au/8180733>



Paul Wells
(03) 5988 2046



John Couper
(03) 5988 2046

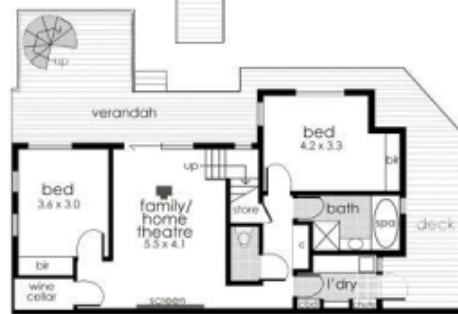


Internal living area
approx: 22 squares

Garage area
approx: 4 squares

All decking areas
approx: 10 squares

Total area
approx: 36 squares



LOWER LEVEL

20 Lahinch Drive, Fingal



COUPERS
MOONAH LINKS PROPERTY